

Scotcloth Production Specification Sheet

Design Name : 2250_SC_W1_C1
 Ends: Chaine de Bissage: Unlimbre: Weibeele

EPI	PPCM
25.00	9.84

Picks: Dute-Hilo de trama: Sichusafaden

PPI	PPCM
25.00	9.84

Finishing:
None

Disclaimer
 Due to differing printers the colour accuracy of this image cannot be guaranteed. Please use PANTONE®(R) colour references for accurate colour.
 Please note that purchasers will be required to convert the Scotcloth warp and weft sets to fit their weaving systems.

Colours: Couleur: color: Farben:

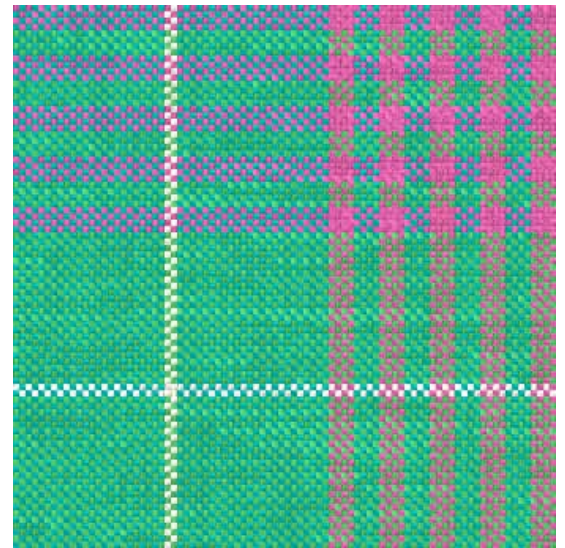
Yarn	Warp	Total
PANTONE_16-5127_TCK	24 24 4	64
PANTONE_11-0103_TCK	2	2
PANTONE_17-2627_TCK	4 4 20	68

Yarn	Weft	Total
PANTONE_16-6444_TCK	24 24 4	64
PANTONE_11-0103_TCK	2	2
PANTONE_17-2627_TCK	4 4 20	68

DRAFT PLAN

PEG PLAN

WEAVE



What do you get when you purchase an image?

1. A production specification sheet, which gives details of how the pattern is made.

The technical specifications include the weave, warp plan, draft, peg plan and weft sequence. The colours used in the design have Pantone® references, to enable different geographical locations to identify colour accurately.

2. One repeat of the design, which can then be magnified or reduced and tiled using Adobe® Photoshop. The original sizing depends on your printer setting.